

14th SWISS GEOSCIENCE MEETING 2016 GENEVA

Dear SGM 2016 participants,

Only ten days left until the SGM 2016, so in addition to the information on the Swiss Geoscience Meeting 2016 Website:

<https://geoscience-meeting.ch/sgm2016/infos>

please find below some information and recommendations for your participation to the SGM2016

The **registration desks** will be open from 12:00 p.m. on Friday and from 07:45 a.m. on Saturday morning.

The SGM will be held at two different locations that are far apart from each other (see attached Map)

- On Friday 18th November (Plenary Session and GeoParty) at the Campus Biotech, Chemin des Mines 9, Geneva.
- On Saturday 19th November (Symposia) at UNIMAIL, Bd du Pont-d'Arve 40, Geneva

For all of you who have successfully paid your registration fee online, please print and bring along the payment confirmation (ticket) you have received per email. This will accelerate the registration process. However, if you can't find your confirmation email anymore, don't worry, we do have the list of registered persons and your conference material with your name will be ready for you for pick-up.

For those few of you who haven't managed to pay their registration fee online, please do so onsite at the registration desk. If you could bring the exact amount (**in cash only**), this would also accelerate the registration process, thank you.

In any case, we recommend that you **arrive early enough to avoid long queues** at the registration desks just before the start of the sessions. This is especially relevant for the plenary session on Friday and for those who have to upload their presentations before the start of their session-block on Saturday.

Please **check the SGM Program booklet** on pages 7-9 to find the room(s) of your symposium(s). The Program booklet is available for download as a PDF file (2,6 MB) at the bottom of the following webpage:

<https://geoscience-meeting.ch/sgm2016/downloads/>

Oral presenters:

- to have your presentation uploaded to your session's room we advise you to **bring it on a USB key directly at least 30 minutes before the start of your time block**, notify the conveners and hand it in to the helper staff present in the room.
- File name: **your file should be named with the last name of the first author and speaking time**. For example: 09:00-09:15 Gruber M., Sommaruga A., Mosar J. => filename will be: 0900Gruber.pdf or 0900Gruber.ppt
- Computer material: a fixed PC is available in all rooms
- File format: powerpoint is installed on all our devices. **We advise to prepare a pdf copy** of your presentation in case of incompatibility issues that could arise (pc-mac, or ppt versions). Please **embed all images and movies** in the document so that it runs smoothly.
- The **optimal format for PowerPoint presentations in Geneva is 16/9**, the more "usual" format 4/3 should however also be OK



Poster presentations:

- Posters can be installed only on Saturday 19th, starting at 07:45 h. The posters should be removed directly after the end of the oral sessions at 17:00 hours. The **poster floor plan** is attached to this email and also available for download at the bottom of the webpage:
<https://geoscience-meeting.ch/sgm2016/downloads/>
- The **poster-boards are numbered** according to the numbering found in the abstract volume or program (<https://geoscience-meeting.ch/sgm2016/program/session-program>).
- If you don't intend spending all coffee breaks standing next to your poster, **Post-its will be made available** to you by the SGM staff to write next to your poster the **time when you will be present** for discussion during the poster sessions or lunch break.

Please note that **no printed version** of the Swiss Geoscience Meeting abstract volume will be distributed to participants. **The abstract volume is however available for download** on the SGM homepage as PDF documents in several different versions.

For your convenience, you can choose between:

- The complete abstract volume in print quality (73 Mb, 639 pages). This version is formatted for double-sided printing (a.k.a. recto-verso)
- The same complete abstract volume but for screen viewing (14.8 Mb).

Alternatively **you can also choose to only download the abstracts for the session(s) you are interested in.**

The PDF files of the complete abstract volume or of the individual sessions can be downloaded from:

<https://geoscience-meeting.ch/sgm2016/downloads/>

A printed version of the program booklet will be distributed to all participants at the registration desks .

For **Wifi**, connect with your eduroam profile, or to "guest-unige" and request any URL, you will then be redirected to an e-portal where you can register and authenticate. You will receive a code via SMS.

Should there be some **last minute information**, these will be posted on the SGM Homepage. On mobile devices, please check under:

https://geoscience-meeting.ch/sgm2016/category/info_board/

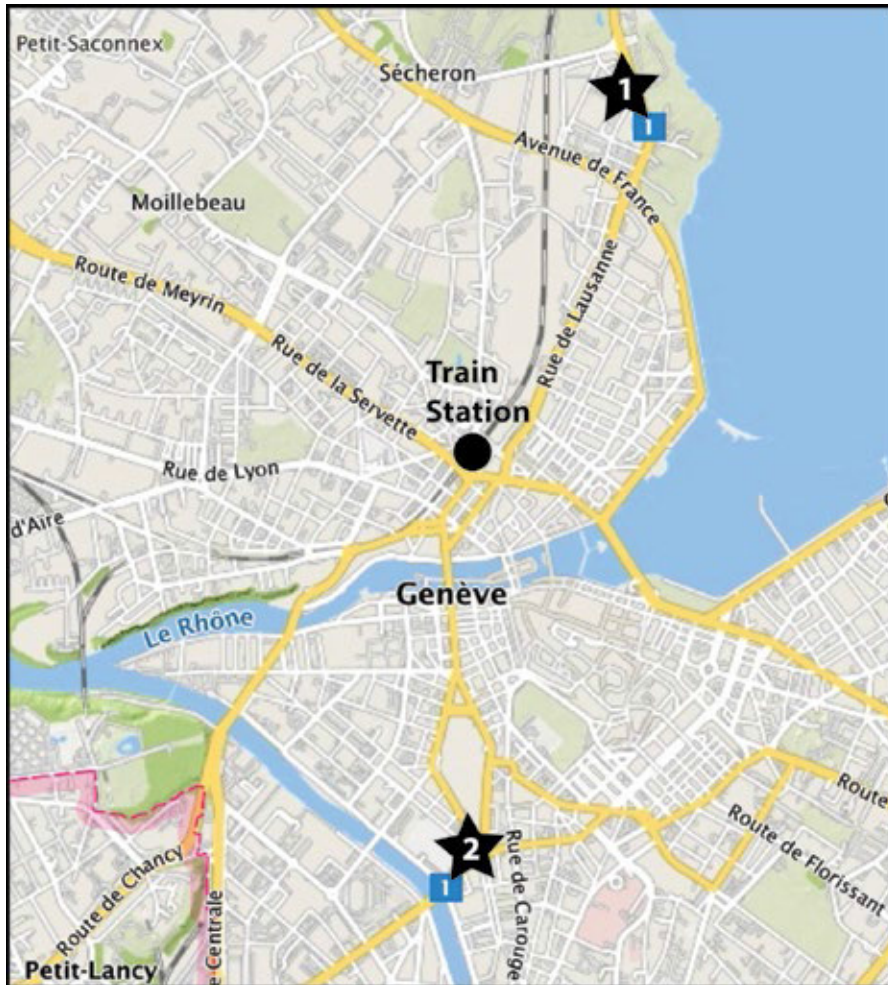
For "push" notifications, you can "follow" the Tweeter account <https://twitter.com/SwissGeoMeeting>

Finally, a team of emergency healthcare will be present onsite, but please do let the Local Committee know in advance (email sebastien.castelltort@unige.ch) if you need special assistance or have a medical condition that needs be known to us.

Looking forward to seeing you in Geneva,

The SGM2016 Program Committee

Location



Location (1) : Friday, 18.11.2016
Auditorium, Campus Biotech
Chemin des Mines 9, 1202 Geneva

From Geneva Central Station «Cornavin»:

Take the bus 25 or 1 until the stop “Mines” (6th stop). The bus stops right in front of the main entrance

or

Take the tram 15 in direction “Nations” until the stop “Maison de la Paix” (3rd stop), walk downhill for about 100 meters (2 minutes), towards the lake, then turn left on “Avenue Blanc”. At the end of the street (about 300 meters), you will reach the main entrance of the building

Location (2) : Saturday, 19.11.2016
University of Geneva, UNIMAIL
Boulevard du Pont-d’Arve 40, 1205 Geneva

From Geneva Central Station «Cornavin»:

Take Tram 15 in direction “Palettes” until the stop “Uni-Mail” (5th stop ~ 10 minutes). You are there.

or

Take Bus 1 in direction “Petit Bel-Air” until stop “Ecole de médecine” (4th stop), Walk down the “Avenue du Mail” in the same direction as the traffic (keeping the Park “Plaine de Plainpalais” to your left) until the church “Temple de Plainpalais”, turn right after the church and cross the road “Boulevard Carl-Vogt”. UniMail is the big modern building to your right. (from Bus station to Uni-Mail ~450 meters).

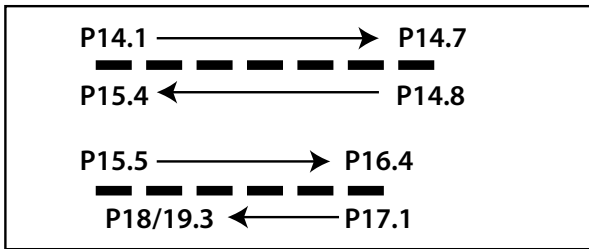
or

Take Tram 18 in direction “Carouge-Rondeau” until stop “Pont d’Arve” (5th stop). Go back a few steps and turn left on the “Boulevard du Pont d’Arve”, walk until the big scary road junction. Uni-Mail is the big modern building to the left of the Church you see across the many roads in front of you. Try to reach it without getting killed. (from Tram station to Uni-Mail ~300 meters).

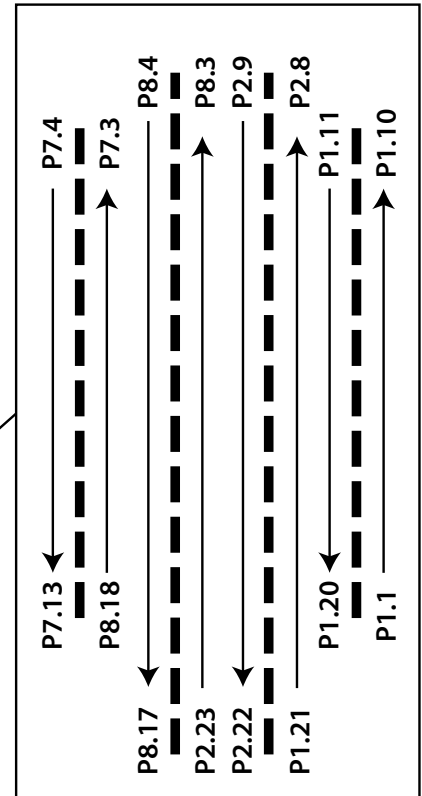
Find your poster

14th SWISS
GEOSCIENCE
MEETING
2016 GENEVA

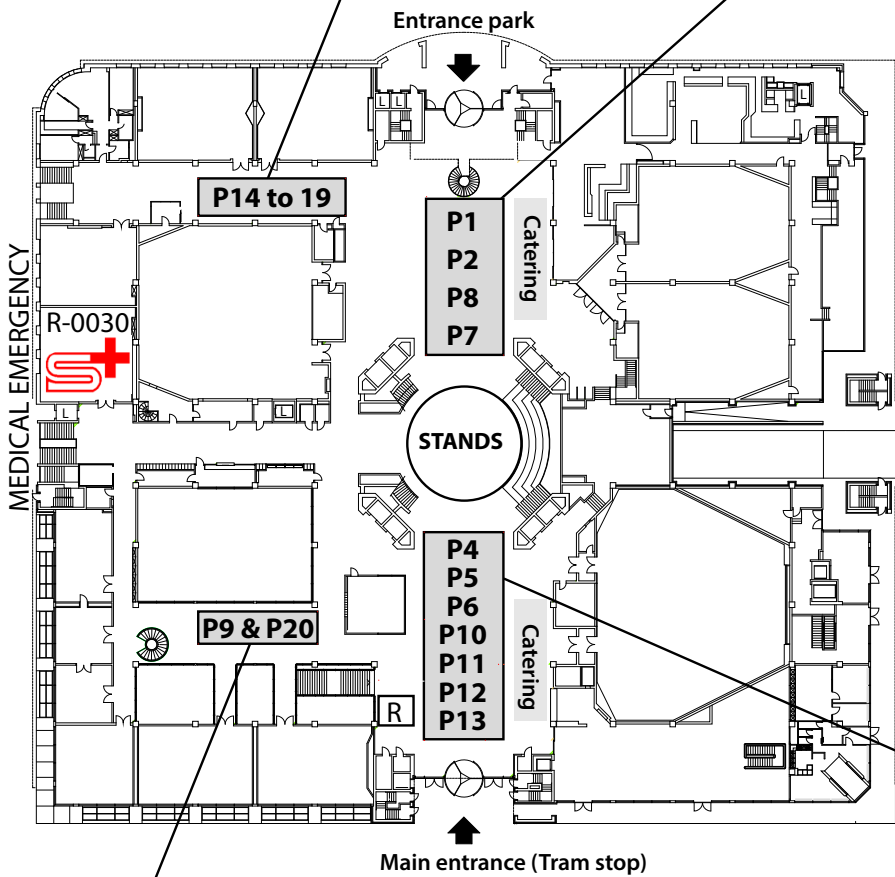
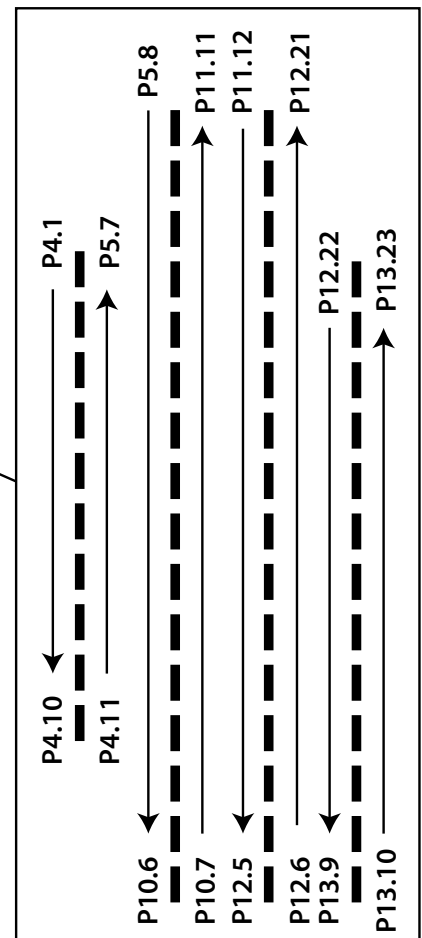
P14, 15, 16, 17, 18/19



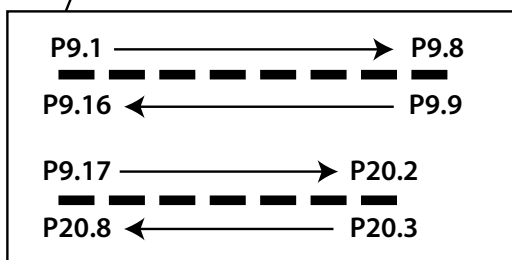
P1, P2, P7, P8



P4,5,6,10 to13



P9 & P20



R=Registration desk